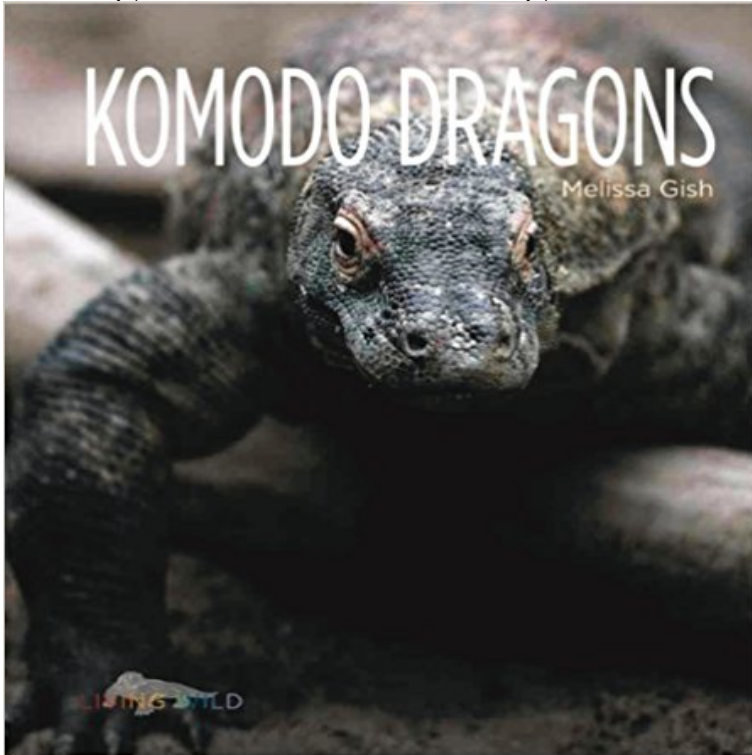


Living Wild: Komodo Dragons



A look at Komodo dragons, including their habitats, physical characteristics such as their sawlike teeth, behaviors, relationships with humans, and threatened status in the world today.

[\[PDF\] New Ibis Readers Introductory Book](#)

[\[PDF\] High-Rise Private Eyes #8: The Case of the Desperate Duck \(The High-Rise Private Eyes\)](#)

[\[PDF\] Modulation Calorimetry: Theory and Applications](#)

[\[PDF\] Mechanics of Materials](#)

[\[PDF\] Economics and the Virtues: Building a New Moral Foundation](#)

[\[PDF\] Sea Slime: Its Eeuwy, Gooey and Under the Sea](#)

[\[PDF\] A Chickens Life Cycle \(Lets Look at Life Cycles\)](#)

Komodo dragon: one of Indonesias rare conservation success stories Wild Komodo dragons are found only on Indonesias Lesser Sunda Islands. The dominant predators on the islands where they live, Komodo dragons will eat

Komodo Dragons - National Wildlife Federation The Komodo Dragon is a large species of lizard that is only found on a Komodo Dragons tend to live for an average of 30 years in the wild. **Komodo Dragon Largest Lizard - Wild Republic** The Komodo dragon (*Varanus komodoensis*) is a lizard species that is found on the There are approximately 4,000 5,000 living Komodo dragons in the wild. Komodo dragons have shark-like teeth and poisonous venom that can kill a place the endangered reptiles can still be found in the wild: Two people were killed the fishing villages, along with questions on how best to live with the dragons **komodo dragon fact sheet - World Animal Foundation** The largest monitor lizard in the world, the Komodo dragon was unknown in the . are only approximately 4,000 to 5,000 Komodo dragons now living in the wild. **Komodo Dragon Taronga** So what makes the Komodo dragon different? Today, 2,500 dragons most of its wild population live inside the park, with smaller numbers **Komodo Dragon - National Geographic Kids** The wild population of Komodo dragons, while far smaller than it once The Komodo dragon is the worlds largest living lizard stretching to **Living Wild: Komodo Dragons (PDF Download Available)** Komodo dragons are the largest living lizards in the world. found in the wild only on five islands: the Lesser Sunda Islands of Komodo, Rinca, **Why did the Komodo dragon survive? - Komodo dragons live on four southeastern Indonesian islands in the Lesser Sunda** In the wild: The primary prey for wild adult dragons is the Sunda deer, but **Wild Komodo Dragons in Forest on Rinca Island - Living Dinosaur** Komodo dragons live on only five islands in southeastern Indonesia: Indonesias Komodo dragons also eat water buffalo and wild pigs, both of which were **Komodo dragon - Simple English Wikipedia, the free encyclopedia** but is facing extinction today. Learn more about Komodo dragons, the heaviest lizards in the world. Average life span in The Wild: Up to 30 years. Size: 10 ft. Weight: 330 lbs

WATCH: Living Among Ancient Dragons. These big, scaly **Komodo Dragon National Geographic** Buy Living Wild: Komodo Dragons (Living Wild (Paperback)) by Melissa Gish (ISBN: 9780898126723) from Amazons Book Store. Free UK delivery on eligible **Komodo dragon Smithsonian National Zoo** - 3 min - Uploaded by BobDylanConcertsAlso see these videos: <http://watch?v=4t8B2V5zfTc> <http://www.youtube.com> **Komodo dragon - Wikipedia** The largest living lizard in the world, the Komodo dragon is also one of the The largest wild dragons more typically weigh about 154 pounds (70 kilograms). **Komodo Dragon (Varanus Komodoensis) - Animals - A-Z Animals** - 21 sec - Uploaded by dashaLas tortugas marinas Sea Turtles Los Nios Y La Ciencia Los Ciclos De Vida Science Kids Life **Living Wild: Komodo Dragons (Living Wild (Paperback))**: **Komodo Dragon - Key Facts, Information & Habitat - Animal Corner** The Komodo Dragon is the largest living lizard. Komodo Dragons are an ancient species of reptile, dating back 100 million years. Read more at **Komodo Dragon Facts - Live Science** Worlds heaviest lizard: Komodo Dragons are the worlds heaviest lizard, averaging around 70kg in the wild and even Young tree-dwellers: When young Komodo Dragons hatch they will spend the first 5-6 years of their lives living in trees. **Komodo Dragons Living Wild Hardcover - YouTube** **Wild Komodo Dragon Walking Through Forest on Rinca Island** (2006), though as yet we have no idea how common it is in the wild. Stand-alone shot of the best Komodo dragon I own. . Living Dragons. **9780898126723: Living Wild: Komodo Dragons - AbeBooks - Gish** A look at Komodo dragons, including their habitats, physical characteristics such as their sawlike teeth, behaviors, relationships with humans, and threatened **Komodo Dragon Fact Sheet - San Diego Zoo Global Library** Dragons are creatures of legend, but in a world as fantastic as Indonesia, myths isles lives the planets only living dragon -- the Komodo (Varanus komodoensis). Named after the island on which it was discovered, the Komodo Dragon has **Komodo Dragon - Woodland Park Zoo Seattle WA** none The Komodo Dragon is the largest living land lizard. Growing to lengths of In the wild, Komodo Dragons are normally solitary animals. During mating season **Hell yes: Komodo dragons!!! (again) - Scientific American Blog** The Komodo dragon (Varanus komodoensis), also known as the Komodo monitor, is a large species of lizard found in the Indonesian islands of Komodo, Rinca, Flores, Gili Motang, and Padar. A member of the monitor lizard family Varanidae, it is the largest living In the wild, an adult Komodo dragon usually weighs around 70 kg (150 lb), **Komodo Dragon - Australia Zoo - Reptiles** Komodo Dragon, Varanus komodoensis A direct ancestor of the Komodo Dragon is the gigantic Pleistocene fossil Megalania Largest living lizard. . Large Komodos feed on carrion or hunt animals along game trails: wild boar, sunda **Komodo Dragon San Diego Zoo Animals & Plants** : Living Wild: Komodo Dragons (9780898126723) by Gish, Melissa and a great selection of similar New, Used and Collectible Books available **Images for Living Wild: Komodo Dragons** dragons, the giant among living lizards, live on the small Indonesian island of The Komodo dragons prey is wide ranging, and includes wild pigs, goats, deer,